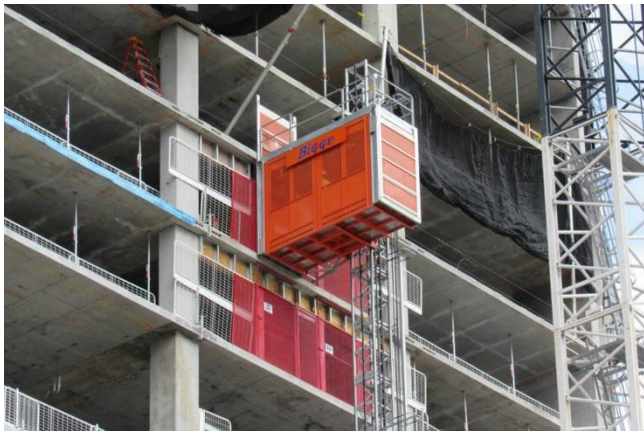


Personnel & Materials Hoist

NEW SOUTH WALES



Unit:	CPCCLHS3001 - Licence to operate a personnel and materials hoist
Price:	Price on application
Duration:	See below
Location:	At your worksite
Pre-requisites:	Minimum age 18, 100 points of Identification (as per SafeWork NSW), adequate literacy & numeracy and USI.

This unit specifies the outcomes required to operate a builder's hoist in which personnel, goods and/or materials may be hoisted, and which comprises a car, structure, machinery or other equipment associated with the hoist, and which may be a cantilever hoist, a tower hoist or a multiple winch operation. Included in this definition are situations where winches may be configured to operate as hoists for the transportation of personnel for licensing purposes.

Course Delivery

A learner guide and review questions will be provided to the student prior to course commencement. To fulfil the training requirements for this course, the student must read through this, complete the review questions and bring both with them on the day.

The course consists of face-to-face theory, mathematical and practical training.

Assessment is conducted through a combination of practical demonstration and verbal or written questioning, including mathematics.

Course Content

- Relevant Australian Standards, Legislation, Regulations and WH&S policy
- Hazard Identification and hazard prevention
- plan work
- conduct routine checks
- conduct hoist operations and
- shut down and secure a hoist

Course Requirements

Students will need to wear appropriate clothing including a hi-visibility shirt/vest and enclosed shoes or boots, as well as meet all pre-requisites listed.

Course Fees

A deposit of \$1,000 is required within 7 days of enrolment, with the balance to be paid on the second day of classroom attendance. All enrolments are considered tentative until payment of the deposit is received.

Course Outcome

Upon successful completion participants will receive a Nationally Recognised Statement of Attainment in *CPCCLHS3001 - Licence to operate a personnel and materials hoist* and an Assessment Summary (AS1) from the accredited assessor to lodge your HRW Licence application.

Important

Upon successful completion of this course, participants have 60 days to submit their application for their HRW Licence at Australia Post. Licensing fees apply.

Anyone assessed as 'not yet competent' can be reassessed on the relevant section **after 48 hours from the original assessment date, and before 90 days** have elapsed (after 90 days a full reassessment will be required).

SafeWork NSW HRW Licences are valid for 5 years.

Dickens Assessment and Training Services (DATS) is a privately owned Registered Training Organisation (RTO), providing quality training and assessments for individual students, industry and the vocational education and training (VET) sector. DATS was established in 2007.

We specialise in onsite and site-specific training and assessments and cover Verification of Competency in all courses offered. Our services cover all areas of Queensland and NSW. DATS also has training facilities at Eagle Farm (QLD), Willawong (QLD), Coffs Harbour (NSW) and Macquarie Park (Sydney, NSW). DATS has access to plant & equipment to support the training programs.

The successful completion of one of our accredited training courses will provide your staff with a nationally recognised statement that has equal worth in all states and territories (individual licensing authorities set different requirements for their own states/territories).

SHORT COURSES OFFERED

Courses have two distinct phases, a training phase and an assessment phase. DATS has an extensive range of training programs accredited by ASQA.

RII Accredited Courses

- RIIHAN203E-Conduct lifting operations
- RIIHAN301E-Operate elevating work platform
- RIIHAN305D-Operate a gantry or overhead crane (remote control)
- RIIHAN307E-Operate a vehicle loading crane
- RIIHAN308F-Load and unload plant
- RIIHAN309F-Conduct telescopic materials handler operations
- RIIMPO315E-Conduct tractor operations
- RIIMPO317F-Conduct roller operations
- RIIMPO318F-Conduct civil construction skid steer loader operations
- RIIMPO319E-Conduct backhoe/loader operations
- RIIMPO320F-Conduct civil construction excavator operations
- RIIMPO321F-Conduct civil construction wheeled front end loader operations
- RIIMPO322E-Conduct civil construction tracked front end loader operations
- RIIMPO323E-Conduct civil construction dozer operations
- RIIMPO324F-Conduct civil construction grader operations
- RIIMPO325E-Conduct civil construction scraper operations
- RIIMPO326E-Conduct water vehicle operations
- RIIMPO337E-Conduct articulated haul truck operations
- RIIMPO338E-Conduct rigid haul truck operations
- RIIVEH304E-Conduct tip truck operations
- RIIWHS202E-Enter and work in confined spaces
- RIIWHS204E-Work safely at heights
- RIISAM203E-Use hand and power tools

TLI Accredited Courses

- TLIA1001-Secure cargo
- TLID0020-Shift materials safely using manual handling methods

High Risk Work Licence Courses

- CPCCLDG3001-Licence to perform dogging
- CPCCLRG3001-Licence to perform rigging basic level
- CPCCLSF2001-Licence to erect, alter & dismantle scaffolding basic level
- CPCCLBM3001-Licence to operate a concrete placing boom
- CPCCLHS3001-Licence to operate a personnel and materials hoist
- CPCCLHS3002-Licence to operate a materials hoist
- CPCCLTC4001-Licence to operate a tower crane
- CPCCLTC4002-Licence to operate a self-erecting tower crane
- TLILIC0022-Licence to operate a slewing mobile crane (up to 20 tonnes)
- TLILIC0023-Licence to operate a slewing mobile crane (up to 60 tonnes)
- TLILIC0021-Licence to operate a slewing mobile crane (up to 100 tonnes)
- TLILIC0020-Licence to operate a slewing mobile crane (over 100 tonnes)
- TLILIC0005-Licence to operate a boom-type elevating work platform (boom length 11 metres or more)
- TLILIC0018-Licence to operate a non-slewing mobile crane (greater than 3 tonnes capacity)
- TLILIC0024-Licence to operate a vehicle loading crane (capacity 10 metre tonnes and above)
- TLILIC0003-Licence to operate a forklift truck
- TLILIC0004-Licence to operate an order picking forklift truck

Additional Courses

- AHCMMOM213-Operate and maintain chainsaws
- AHCPCM205-Fell small trees
- AURTGA001-Drive and manoeuvre trailers
- CPCCWHS1001-Prepare to work safely in the construction industry (Whitecard)
- MSMWHS216-Operate breathing apparatus
- MSMWHS217-Gas test atmospheres
- PMASUP236-Operate vehicles in the field
- PUAEME001-Provide emergency care
- PUAFER005 Operate as part of an emergency control organisation
- PUAFER006 Lead an emergency control organisation
- PUAFIR210 Prevent injury
- PUASAR022 Participate in a rescue operation
- Work near overhead powerlines*

Association Specific Courses

*EWPA Operator Licence - 'Yellow Card'

- Scissor Lift
- Cherry Picker (trailer mounted)
- Vertical Lift
- Truck Mounted lift
- Boom Lift < 11 metres
- EWP Transport Module

*TSHA Operator Licence – 'Gold Card'

*Non-accredited